

# **ALBANY POLICE DEPARTMENT CRIME ANALYSIS**

**“Combating Crime and Protecting Lives”**

***Prepared By the Crime Analysis Unit of The Albany Police Department***

**\*\*These numbers may be updated from month to month as records updates occur\*\***

# 2014

**Month of November**

**Distribution: CITY MANAGER, ASST. CITY MANAGERS**

CHIEF OF POLICE  
DEPUTY CHIEF - INVESTIGATIVE  
DEPUTY CHIEF – UNIFORM  
DEPUTY CHIEF – SUPPORT SERVICES  
MAJOR - INTERNAL AFFAIRS  
INVESTIGATIONS CAPTAINS  
UNIFORM CAPTAINS  
ACCREDITATION MANAGER

SPECIAL OPERATIONS CAPT.  
FAMILY PROTECTION  
RECORDS SUPERVISOR  
PLANNING & RESEARCH  
TRAINING SUPERVISOR  
CHIEF’S ADMIN ASSISTANT  
SUPPORT SERVICES LT

**\*Information Included in this Report Reflects  
Compliance with UCR Reporting Standards**

***The information contained in this report is primarily raw data until calendar year reporting.***

Please contact David Sparks, APD Crime Analyst for questions regarding this report @ 431-2878.

# Monthly Part I Crimes

## Albany Police Department

### Part I Crimes Committed During the Month of November 2014 with Comparisons of November 2013 & 2012

Actual Offenses	2014 2013 Month to Month		+/- Change		2014 2012 Month to Month		+/- Change	
Offenses Committed	November 2014	November 2013	#	%	November 2014	November 2012	#	%
Homicide	3	0	3	*NC	3	0	3	*NC
Rape	1	1	0	0.00	1	1	0	0.00
Robbery	13	16	-3	-18.75	13	16	-3	-18.75
Aggravated Assault	47	50	-3	-6.00	47	36	11	30.56
<b>Violent Crime Total</b>	<b>64</b>	<b>67</b>	<b>-3</b>	<b>-4.48</b>	<b>64</b>	<b>53</b>	<b>11</b>	<b>20.75</b>
Arson	3	0	3	*NC	3	2	1	50.00
Burglary	96	124	-28	-22.58	96	95	1	1.05
Larceny	204	228	-24	-10.53	204	253	-49	-19.37
Auto Theft	10	18	-8	-44.44	10	16	-6	-37.50
<b>Property Crime Total</b>	<b>313</b>	<b>370</b>	<b>-57</b>	<b>-15.41</b>	<b>313</b>	<b>366</b>	<b>-53</b>	<b>-14.48</b>
<b>Crime Trend Total</b>	<b>377</b>	<b>437</b>	<b>-60</b>	<b>-13.73</b>	<b>377</b>	<b>419</b>	<b>-42</b>	<b>-10.02</b>

### Part I Case Clearances During the Month of November 2014 with Comparisons of November 2013 & 2012

	2014	2013	2012	2014	2013	2012
Offenses Cleared	November # Cleared	November # Cleared	November # Cleared	November % Cleared	November % Cleared	November % Cleared
Homicide	0	0	0	0.00%	*NC	*NC
Rape	0	0	3	0.00%	0.00%	300.00%
Robbery	5	6	4	38.46%	37.50%	25.00%
Aggravated Assault	23	22	12	48.94%	44.00%	33.33%
<b>Violent Crime Cleared</b>	<b>28</b>	<b>28</b>	<b>19</b>	<b>43.75%</b>	<b>41.79%</b>	<b>35.85%</b>
Arson	1	0	0	33.33%	*NC	0.00%
Burglary	8	9	6	8.33%	7.26%	6.32%
Larceny	49	44	43	24.02%	19.30%	17.00%
Auto Theft	2	1	3	20.00%	5.56%	18.75%
<b>Property Crime Cleared</b>	<b>60</b>	<b>54</b>	<b>52</b>	<b>19.17%</b>	<b>14.59%</b>	<b>14.21%</b>
<b>Clearance Total</b>	<b>88</b>	<b>82</b>	<b>71</b>	<b>23.34%</b>	<b>18.76%</b>	<b>16.95%</b>

\* The Crime Trend and Clearance Totals do not include percentages for numbers not divisible by 0.

# Year to Date Part I Crimes

## Albany Police Department

Part I Crimes Committed Year-to-date as of November 2014 with Comparisons of November 2013 & 2012								
Actual Offenses	2014 Year to Date	2013 Year to Date	+/- Change			2014 Year to Date	2012 Year to Date	+/- Change
	November 2014	November 2013	#	%		November 2014	November 2012	# %
<b>Offenses Committed</b>								
Homicide	8	7	1	14.29		8	4	4 100.00
Rape	25	17	8	47.06		25	24	1 4.17
Robbery	147	162	-15	-9.26		147	201	-54 -26.87
Aggravated Assault	483	492	-9	-1.83		483	528	-45 -8.52
<b>Violent Crime Total</b>	<b>663</b>	<b>678</b>	<b>-15</b>	<b>-2.21</b>		<b>663</b>	<b>757</b>	<b>-94 -12.42</b>
Arson	16	19	-3	-15.79		16	16	0 0.00
Burglary	1073	1175	-102	-8.68		1073	1316	-243 -18.47
Larceny	2637	2935	-298	-10.15		2637	3103	-466 -15.02
Auto Theft	159	163	-4	-2.45		159	210	-51 -24.29
<b>Property Crime Total</b>	<b>3885</b>	<b>4292</b>	<b>-407</b>	<b>-9.48</b>		<b>3885</b>	<b>4645</b>	<b>-760 -16.36</b>
<b>Crime Trend Total</b>	<b>4548</b>	<b>4970</b>	<b>-422</b>	<b>-8.49</b>		<b>4548</b>	<b>5402</b>	<b>-854 -15.81</b>

Part I Case Clearances Year-to-date as of November 2014 with Comparisons of November 2013 & 2012							
2014		2013	2012	2014		2013	2012
Offenses Cleared	November # Cleared	November # Cleared	November # Cleared	November % Cleared	November % Cleared	November % Cleared	
Homicide	4	5	3	50.00%	71.43%	75.00%	
Rape	18	6	15	72.00%	35.29%	62.50%	
Robbery	37	48	32	25.17%	29.63%	15.92%	
Aggravated Assault	228	206	231	47.20%	41.87%	43.75%	
Violent Crime Cleared	287	265	281	43.29%	39.09%	37.12%	
Arson	1	7	3	6.25%	36.84%	18.75%	
Burglary	124	146	127	11.56%	12.43%	9.65%	
Larceny	572	573	618	21.69%	19.52%	19.92%	
Auto Theft	42	35	39	26.42%	21.47%	18.57%	
Property Crime Cleared	739	761	787	19.02%	17.73%	16.94%	
Clearance Total	1026	1026	1068	22.56%	20.64%	19.77%	

\* The Crime Trend and Clearance Totals do not include percentages for numbers not divisible by 0.

# Monthly Part II and Other Crimes

## Albany Police Department

Part II Crime Comparison of November 2014 Data with Previous Year/Month									
Part II Crimes	November 2014	November 2013	+/- #	Change %		November 2014	October 2014	+/- #	Change %
Disorderly Conduct	69	77	-8	-10.39		69	73	-4	-5.48
Domestic Violence	155	125	30	24.00		155	155	0	0.00
Disorderly w/intoxicated	0	0	0	*NC		0	0	0	*NC
D.U.I.	6	14	-8	-57.14		6	18	-12	-66.67
Child Molestation	3	2	1	50.00		3	6	-3	-50.00
Cruelty to Child	4	6	-2	-33.33		4	0	4	*NC
Child Protec: Curfew	0	0	0	*NC		0	0	0	*NC
Child Protec:Truancy	0	2	-2	-100.00		0	0	0	*NC
Interfere w/Custody	5	0	5	*NC		5	6	-1	-16.67
Child Abandonment	0	0	0	*NC		0	0	0	*NC
Enticing a Child	0	0	0	*NC		0	0	0	*NC
Forgery	12	23	-11	-47.83		12	19	-7	-36.84
Noise Ordinance Viol.	0	1	-1	-100.00		0	0	0	*NC
Harassing Phone Calls	5	9	-4	-44.44		5	6	-1	-16.67
Loitering	5	6	-1	-16.67		5	4	1	25.00
Missing Persons	18	16	2	12.50		18	27	-9	-33.33
Runaway	2	1	1	100.00		2	0	2	*NC
Suicide	1	0	1	*NC		1	2	-1	-50.00
Underage Poss./Consum.	3	1	2	200.00		3	1	2	200.00
Criminal Damage	28	19	9	47.37		28	38	-10	-26.32
Theft: Gas Drive Off	2	1	1	100.00		2	0	2	*NC
Simple Assault	2	9	-7	-77.78		2	1	1	100.00
Simple Battery	81	91	-10	-10.99		81	69	12	17.39
Battery	26	28	-2	-7.14		26	28	-2	-7.14
Obstruct/Hinder Police	20	58	-38	-65.52		20	21	-1	-4.76
Sexual Battery	0	2	-2	-100.00		0	2	-2	-100.00
Open Container	16	20	-4	-20.00		16	15	1	6.67
Sodomy	0	0	0	*NC		0	1	-1	-100.00
Statutory Rape	0	2	-2	-100.00		0	0	0	*NC
Saggy Pants	1	22	-21	-95.45		1	16	-15	-93.75
All Cases Not Listed	457	671	-214	-31.89		457	560	-103	-18.39
Total Part II Crime	921	1206	-285	-23.63		921	1068	-147	-13.76

\*\* The Crime Trend and Clearance Totals do not include percentages for numbers not able to be divided by 0.

# Year to Date Part II and Other Crimes

## Albany Police Department

Part II Crime Comparison of 2014 Year to Date with Previous Years 2013 & 2012									
Part II Crimes	November 2014	November 2013	+/- #	Change %		November 2014	November 2012	+/- #	Change %
Disorderly Conduct	744	826	-82	-9.93		744	873	-129	-14.78
Domestic Violence	1477	1680	-203	-12.08		1477	1825	-348	-19.07
Disorderly wh/intoxicated	0	0	0	*NC		0	0	0	*NC
D.U.I.	119	111	8	7.21		119	104	15	14.42
Child Molestation	42	35	7	20.00		42	48	-6	-12.50
Child Cruelty	48	42	6	14.29		48	45	3	6.67
Curfew	0	3	-3	-100.00		0	5	-5	-100.00
Truancy	1	3	-2	-66.67		1	6	-5	-83.33
Interfere w/Custody	49	10	39	390.00		49	9	40	444.44
Child Abandonment	0	0	0	*NC		0	0	0	*NC
Enticing a Child	1	1	0	0.00		1	6	-5	-83.33
Forgery	135	212	-77	-36.32		135	188	-53	-28.19
Noise Ordinance Viol.	4	1	3	300.00		4	5	-1	-20.00
Harassing Phone Calls	69	70	-1	-1.43		69	136	-67	-49.26
Loitering	32	39	-7	-17.95		32	36	-4	-11.11
Missing Persons	227	221	6	2.71		227	417	-190	-45.56
Runaway	9	7	2	28.57		9	7	2	28.57
Suicide	5	4	1	25.00		5	5	0	0.00
Underage Poss./Consum.	27	19	8	42.11		27	15	12	80.00
Criminal Damage	281	256	25	9.77		281	327	-46	-14.07
Theft: Gas Drive Off	10	11	-1	-9.09		10	26	-16	-61.54
Simple Assault	27	92	-65	-70.65		27	66	-39	-59.09
Simple Battery	981	921	60	6.51		981	915	66	7.21
Battery	278	320	-42	-13.13		278	389	-111	-28.53
Obstruction of Officer	241	307	-66	-21.50		241	213	28	13.15
Sexual Battery	17	21	-4	-19.05		17	21	-4	-19.05
Open Container	194	130	64	49.23		194	209	-15	-7.18
Sodomy	15	15	0	0.00		15	12	3	25.00
Statutory Rape	7	8	-1	-12.50		7	6	1	16.67
Saggy Pants	149	321	-172	-53.58		149	246	-97	-39.43
All Other Cases	6626	6503	123	1.89		6626	5857	769	13.13
Total Part II Crime	11815	12189	-374	-3.07		11815	12017	-202	-1.68

\*\* The Crime Trend and Clearance Totals do not include percentages for numbers not able to be divided by 0.

# Monthly Part I Crimes by District

## Albany Police Department

### November 2014

West Actual Offenses			
Offenses Committed	Nov 2014	Oct 2014	Year to Date 2014
Homicide	0	0	2
Rape	0	1	10
Robbery	3	4	42
Aggravated Assault	8	13	120
<b>Violent Crime Total</b>	<b>11</b>	<b>18</b>	<b>174</b>
Arson	0	0	1
Burglary	42	24	368
Larceny	86	87	1105
Auto Theft	4	7	55
<b>Property Crime Tot.</b>	<b>132</b>	<b>118</b>	<b>1529</b>
<b>Crime Trend Total</b>	<b>143</b>	<b>136</b>	<b>1703</b>

Central Actual Offenses			
Offenses Committed	Nov 2014	Oct 2014	Year to Date 2014
Homicide	0	1	1
Rape	1	1	8
Robbery	7	5	69
Aggravated Assault	27	29	232
<b>Violent Crime Total</b>	<b>35</b>	<b>36</b>	<b>310</b>
Arson	0	0	4
Burglary	26	24	335
Larceny	65	89	782
Auto Theft	3	2	48
<b>Property Crime Tot.</b>	<b>94</b>	<b>115</b>	<b>1169</b>
<b>Crime Trend Total</b>	<b>129</b>	<b>151</b>	<b>1479</b>

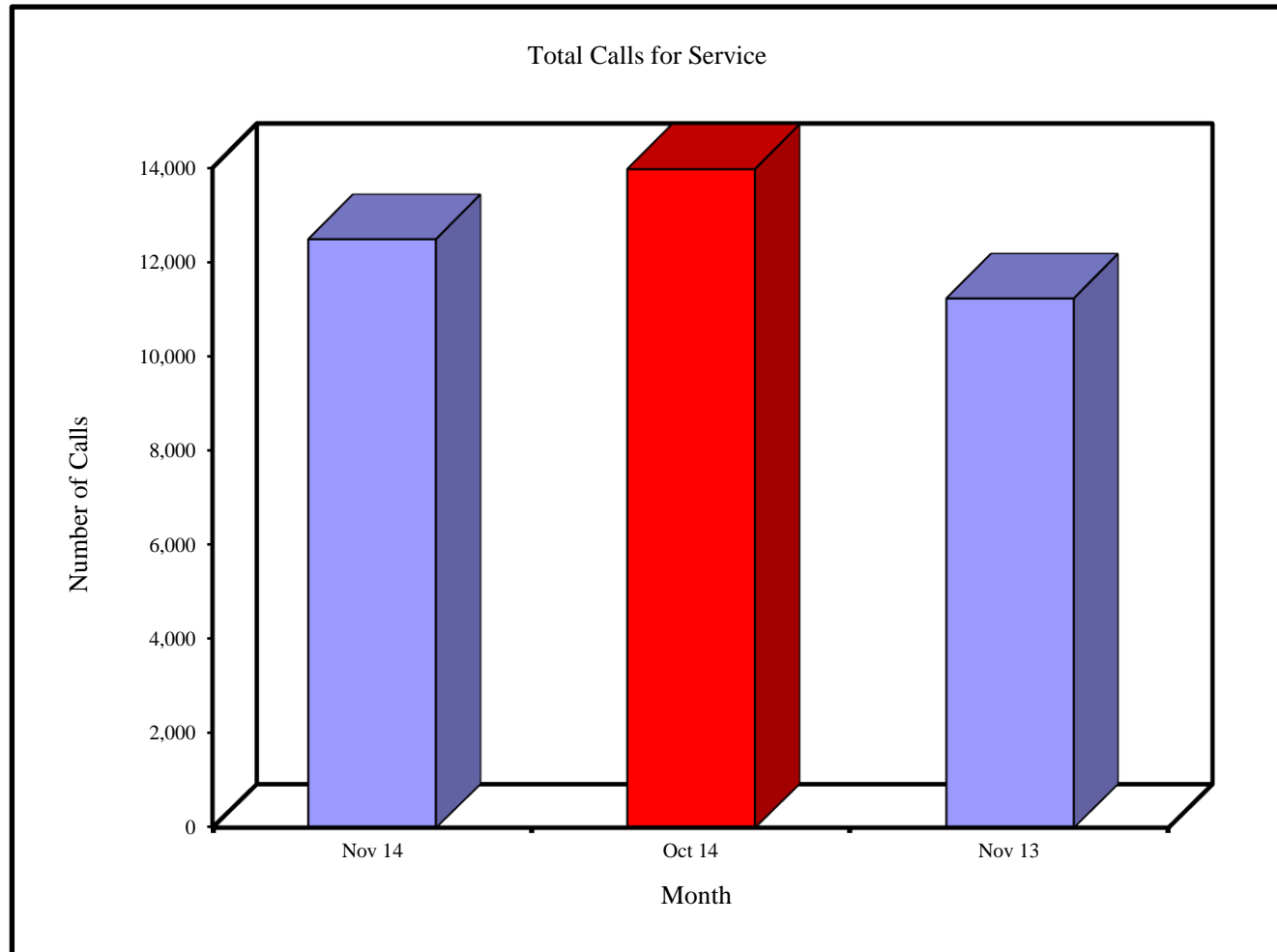
East Actual Offenses			
Offenses Committed	Nov 2014	Oct 2014	Year to Date 2014
Homicide	3	0	5
Rape	0	0	7
Robbery	3	2	36
Aggravated Assault	12	11	131
<b>Violent Crime Total</b>	<b>18</b>	<b>13</b>	<b>179</b>
Arson	3	1	11
Burglary	28	16	370
Larceny	53	53	750
Auto Theft	3	6	56
<b>Property Crime Tot.</b>	<b>87</b>	<b>76</b>	<b>1187</b>
<b>Crime Trend Total</b>	<b>105</b>	<b>89</b>	<b>1366</b>

# Monthly Total Calls for Service

## Albany Police Department

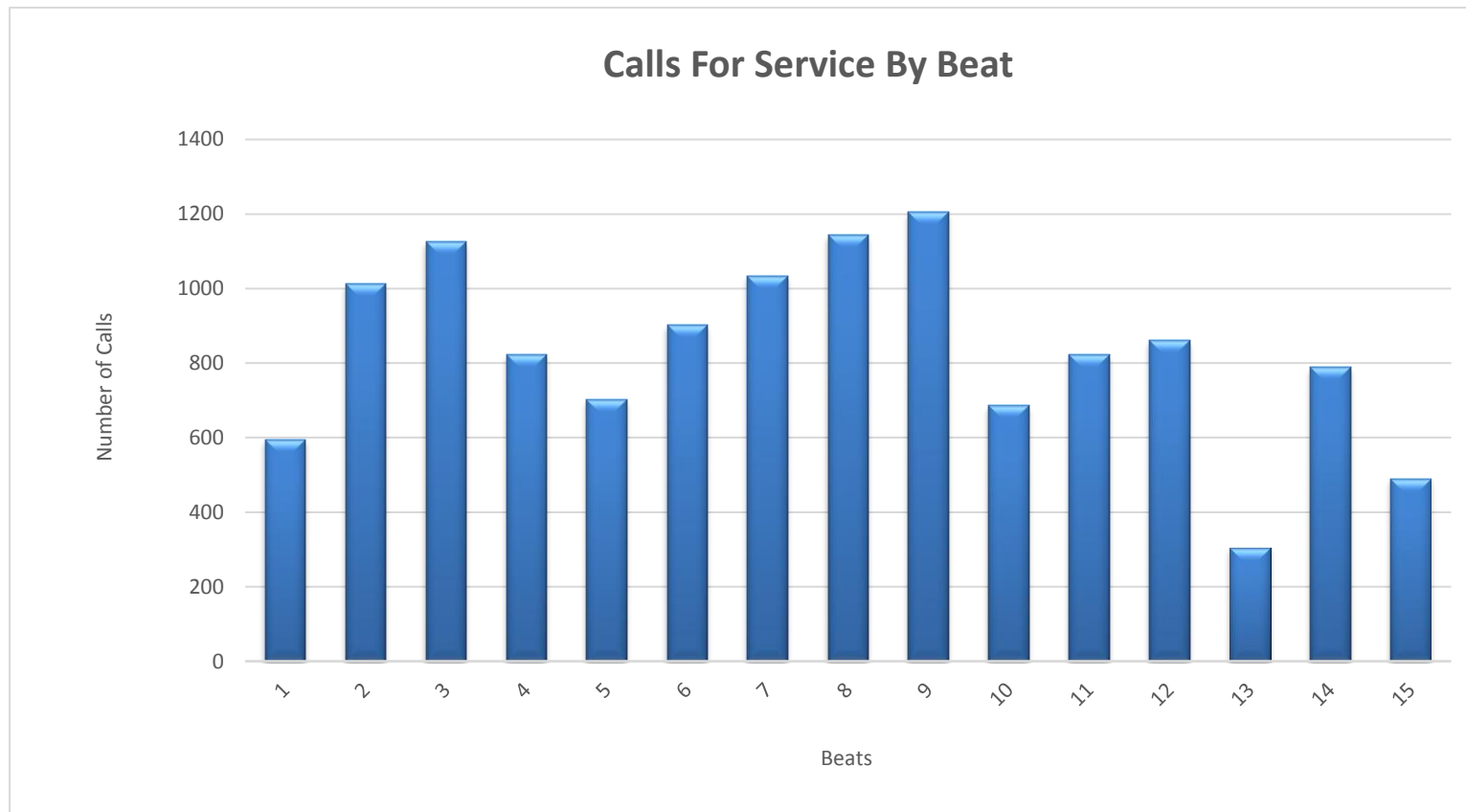
### Total Calls For Service

Nov 14	Oct 14	Nov 13
12,497	13,976	11,245



# Monthly Calls for Service by Beats

## Albany Police Department



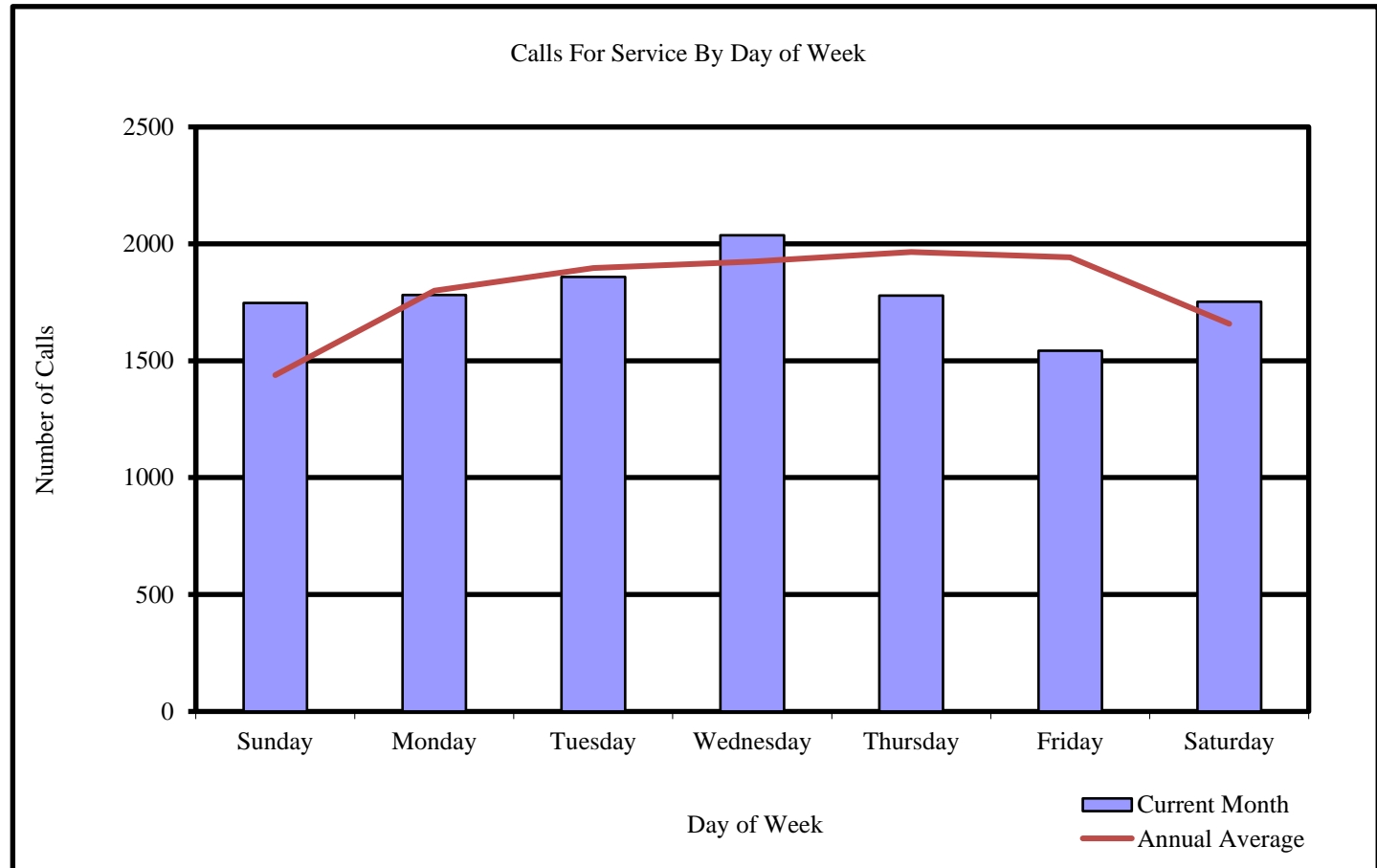
Beats	1	2	3	4	5	6	7	8	9	10	11	12	13	14	15
Calls in November 2014	595	1013	1126	822	702	903	1034	1144	1205	687	823	861	304	789	489



# Monthly Calls for Service by Day of Week

## Albany Police Department

<u>Calls For Service</u>	
Day	November 2014
Sunday	1747
Monday	1781
Tuesday	1859
Wednesday	2037
Thursday	1778
Friday	1543
Saturday	1752

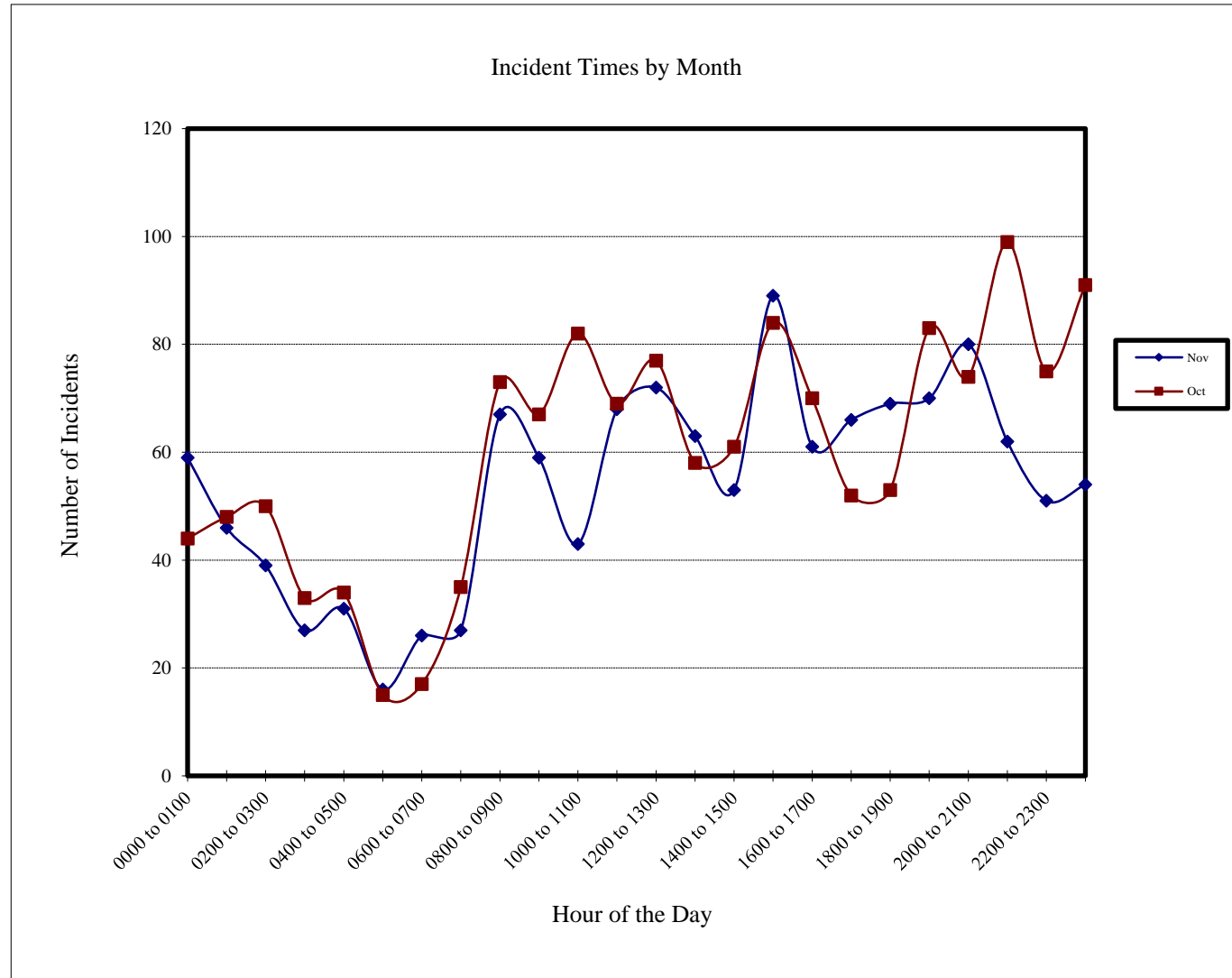


# Incidents by Hour

## Albany Police Department

### Incident Times by Month

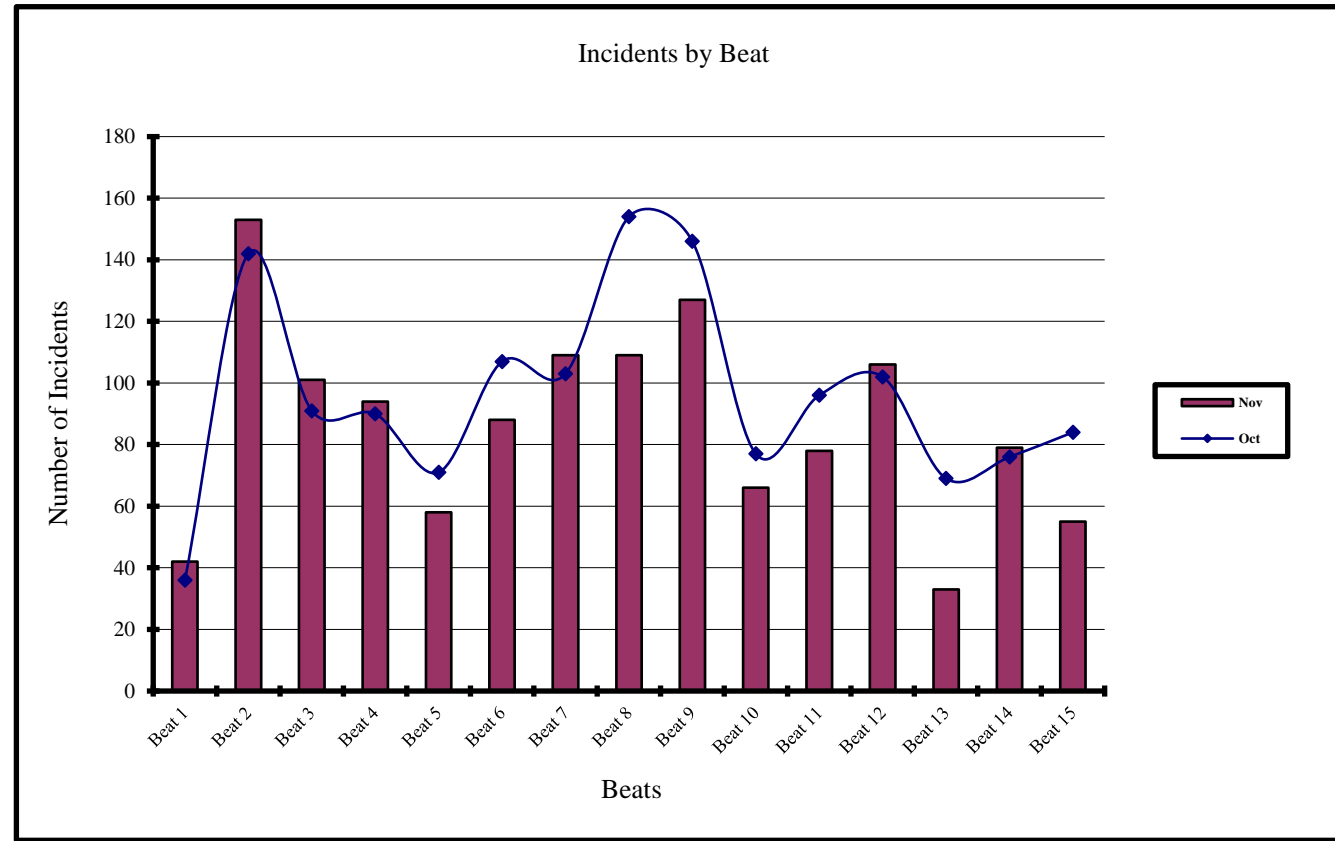
Hour of Day	Nov 2014	Oct 2014
0000 to 0100	59	44
0100 to 0200	46	48
0200 to 0300	39	50
0300 to 0400	27	33
0400 to 0500	31	34
0500 to 0600	16	15
0600 to 0700	26	17
0700 to 0800	27	35
0800 to 0900	67	73
0900 to 1000	59	67
1000 to 1100	43	82
1100 to 1200	68	69
1200 to 1300	72	77
1300 to 1400	63	58
1400 to 1500	53	61
1500 to 1600	89	84
1600 to 1700	61	70
1700 to 1800	66	52
1800 to 1900	69	53
1900 to 2000	70	83
2000 to 2100	80	74
2100 to 2200	62	99
2200 to 2300	51	75
2300 to 2400	54	91



# Current and Previous Months Comparison of Incidents by Beat

## Albany Police Department

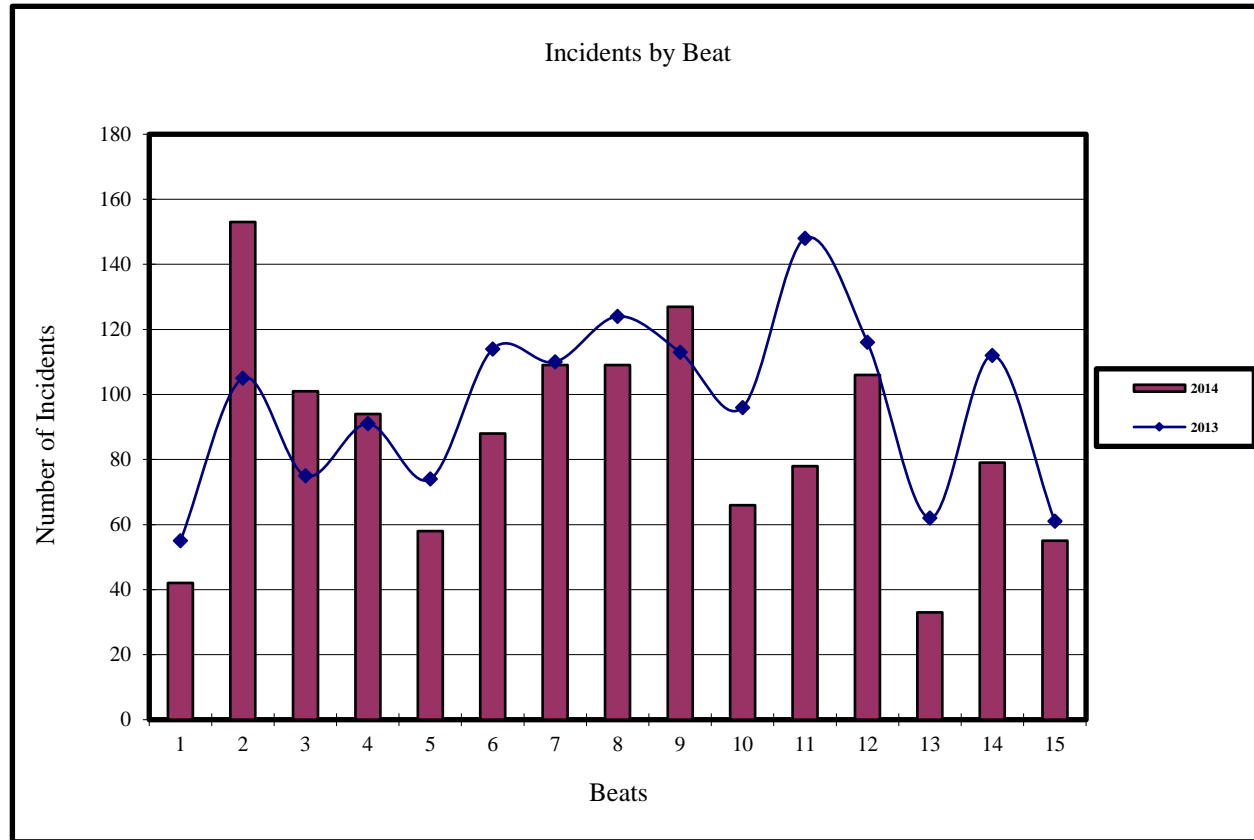
Beat	Incidents	
	Nov 2014	Oct 2014
Beat 1	42	36
Beat 2	153	142
Beat 3	101	91
Beat 4	94	90
Beat 5	58	71
Beat 6	88	107
Beat 7	109	103
Beat 8	109	154
Beat 9	127	146
Beat 10	66	77
Beat 11	78	96
Beat 12	106	102
Beat 13	33	69
Beat 14	79	76
Beat 15	55	84



# Current and Previous Year Comparision of Incidents by Beat

## Albany Police Department

Incidents		
Beat	Nov 2014	Nov 2013
Beat 1	42	55
Beat 2	153	105
Beat 3	101	75
Beat 4	94	91
Beat 5	58	74
Beat 6	88	114
Beat 7	109	110
Beat 8	109	124
Beat 9	127	113
Beat 10	66	96
Beat 11	78	148
Beat 12	106	116
Beat 13	33	62
Beat 14	79	112
Beat 15	55	61



# Current and Previous Month Comparison of Monthly Incidents by Day of Week Albany Police Department

Incidents		
Day	Nov 2014	Oct 2014
Sunday	187	174
Monday	175	204
Tuesday	172	203
Wednesday	166	226
Thursday	159	239
Friday	194	220
Saturday	243	178

